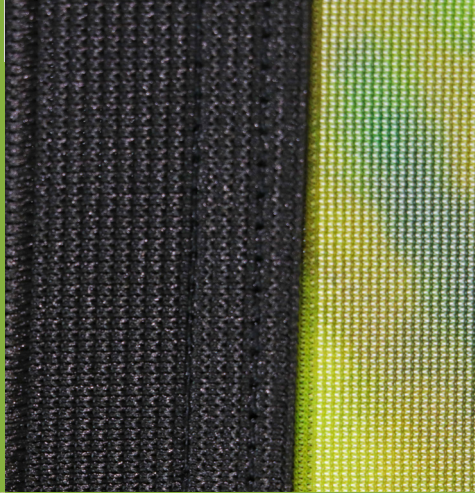
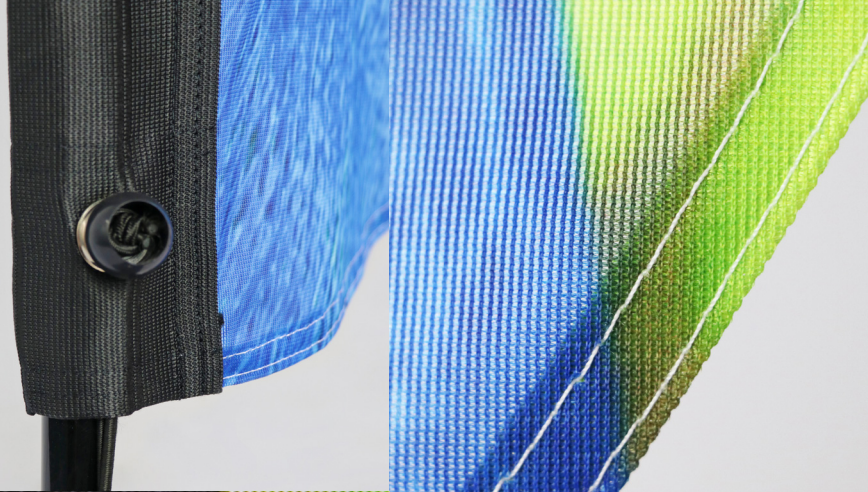


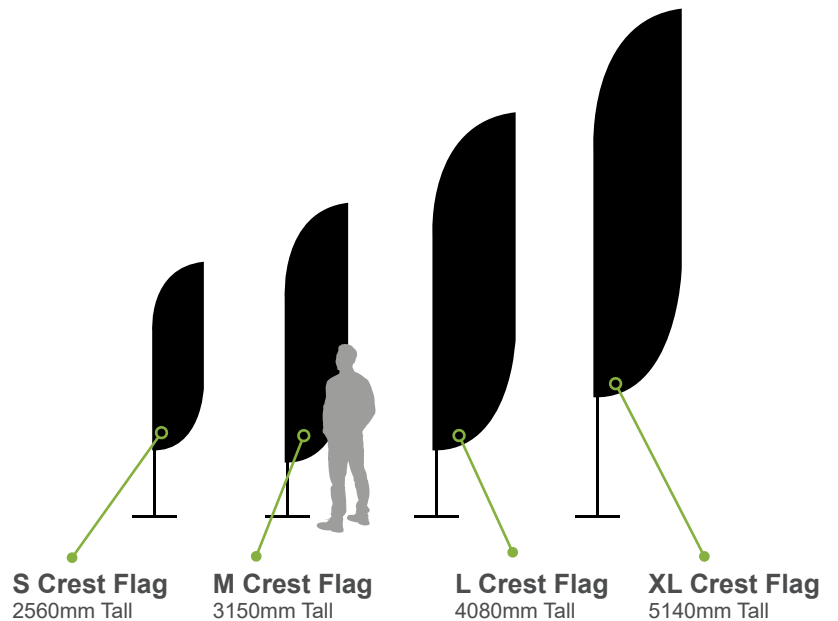
◦ Spec Sheet ◦

# Crest FLAG

- Suitable for both outdoor and indoor use
- Lightweight, portable and easy to assemble
- Printed using a dye-sublimation process for great show-through on the reverse
- Includes high-performance aluminium and GRP poles (collapsible into multiple pieces)
- Available in four sizes
- Multiple options for bases (not included)
- Stable up to beaufort scale: 4 (13-18 mph)



## Available sizes



## Specification

Name	Small	Medium	Large	Extra Large
Standing Height	2560mm	3150mm	4080mm	5140mm
Graphic Width	500mm	600mm	785mm	850mm
Graphic Height	1900mm	2600mm	3400mm	3900mm
Graphic Ground Clearance	660mm	550mm	700mm	1240mm